



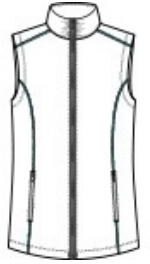
A smooth face, brushed back and coverstitching make this warm fleece vest a classier alternative to more casual fleece.

- Can be zipped in and secured by snap attachment inside an outer Collective layer
- 5.9-ounce, 100% polyester fleece
- Dyed-to-match and contrast coverstitch
- Slightly longer length
- Ruching at collar
- Molded center front zipper
- Front reverse-coil zippered pockets
- Tulip hem

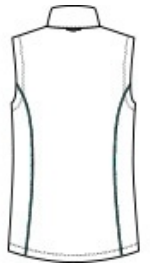
**

CARE INSTRUCTIONS

Machine Wash Cold With Like Colors. Do Not Use Fabric Softener. Tumble Dry Low. Remove Promptly. Only Non-Chlorine Bleach When Needed. Cool Iron If Necessary. Do Not Dry Clean.



front



back

HOW TO MEASURE



BUST

Measure under the arm and around the fullest part of the bust with arms down, keeping tape horizontal.

SIZE CHART

	XS	S	M	L	XL	XXL	3XL	4XL
Size	2	4/6	8/10	12/14	16/18	20/22	24/26	28/30
Bust	32-34	35-36	37-38	39-41	42-44	45-47	48-51	52-55

COLOR INFORMATION



Deep Black
PMS NTR BLACK

Graphite
PMS 425C